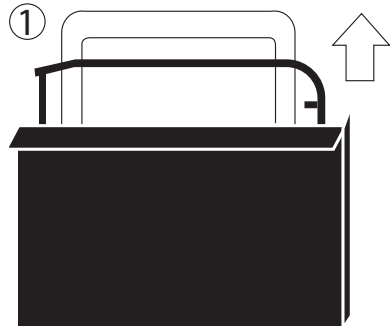


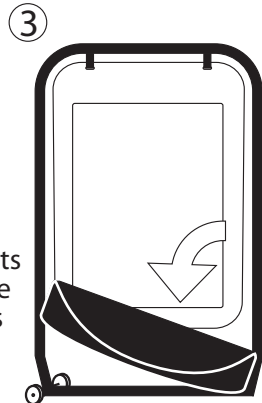
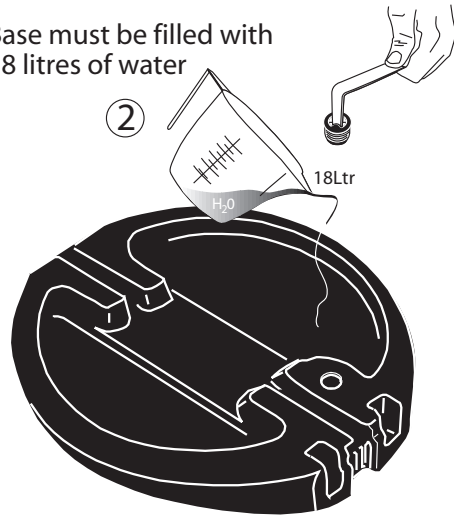
# Swinger 4000 & Poster Insert

## Assembly Instructions

## Panel Installation

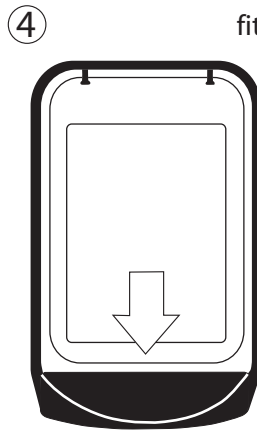


Base must be filled with 18 litres of water

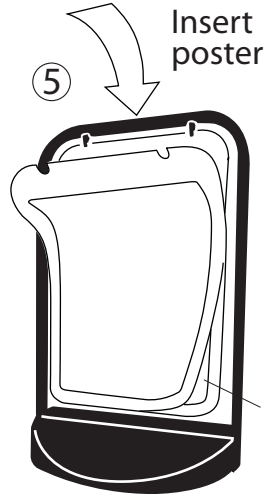


Cut outs in base at this end.

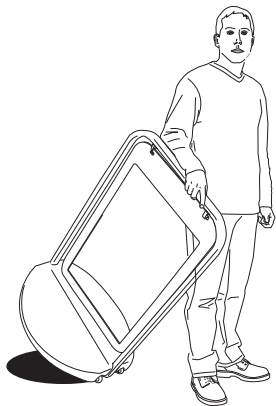
Wheels



These cut outs in the base fit over the wheels on the frame

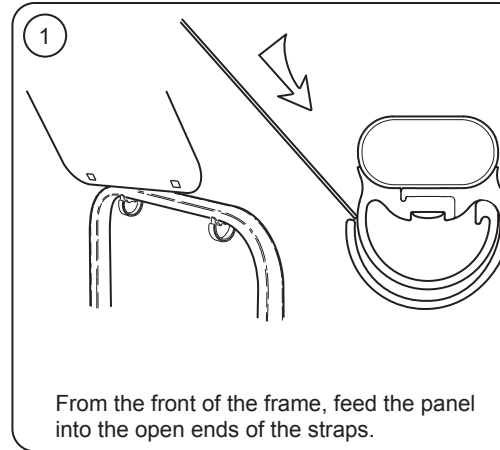


Open panel either side for additional poster access

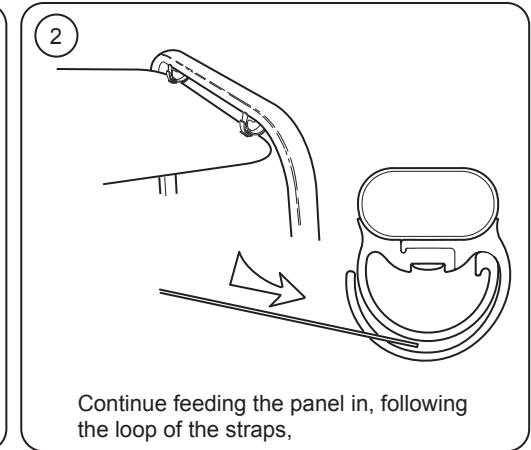


Once assembled, the whole sign can be easily moved without the need to remove the base.

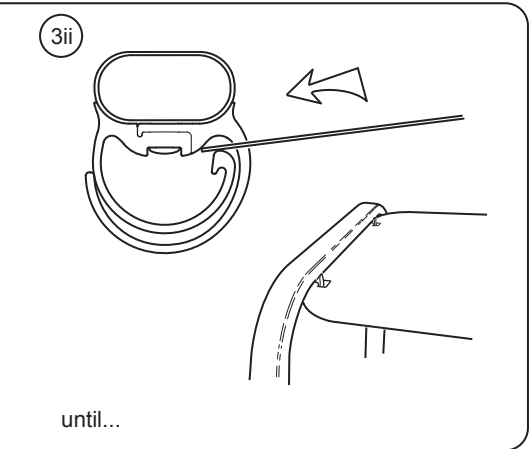
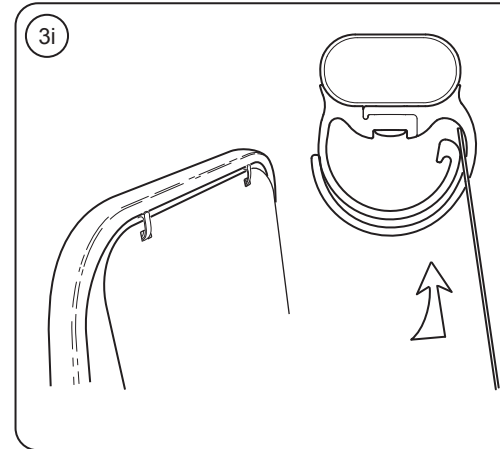
We wish to point out that it is the responsibility of the shop owner/user to ensure that the siting of this pavement sign complies with all the local By Laws and Highway Regulations.



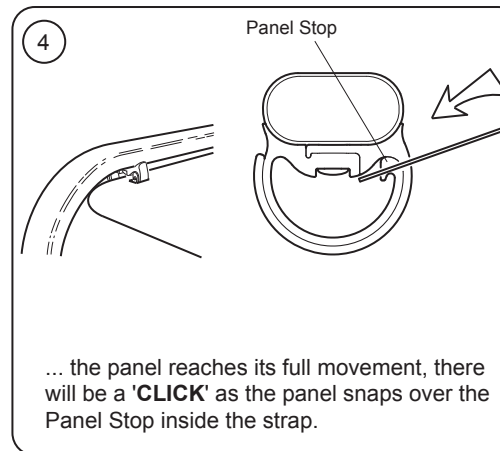
From the front of the frame, feed the panel into the open ends of the straps.



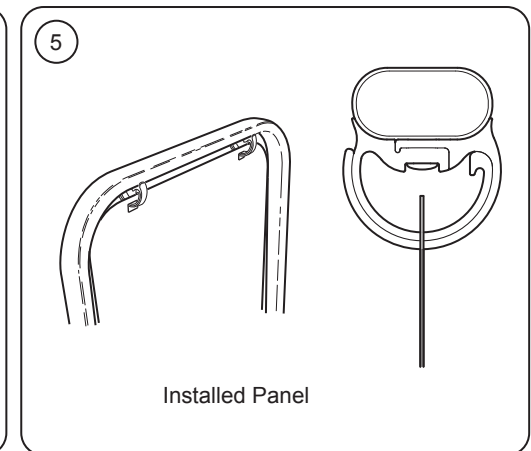
Continue feeding the panel in, following the loop of the straps,



until...



... the panel reaches its full movement, there will be a 'CLICK' as the panel snaps over the Panel Stop inside the strap.



Installed Panel